

The Eagle Series



COMPREHENSIVE CDMA PILOT SCANNERS

The Eagle Series are high speed, mobile, field measurement instruments that continuously survey all Cellular or PCS CDMA Pilot channel signals and report their power profiles.

FEATURES:

- Complete scan of all PN positions in 27 msec (at half-chip intervals)
- Identification of Pilot Pollution, Rogue Pilots, and Island Cells
- Independent measurement of E_c and I_o for direct and multipath components
- Complete and fast Pilot channel characterization independent of network parameters
- Analysis and verification of hand-off thresholds
- RSSI analysis
- Built-in GPS with gen-lock circuitry to lock the Eagle to CDMA Base Station time
- Open architecture system



The Eagle Series is just one of many exceptional design solutions from Berkeley Varitronics. Call us today for more information:

(732) 548-3737 / Fax: (732) 548-3404

Internet: <http://www.bvsystems.com>

Email: info@bvsystems.com

**BERKELEY
VARITRONICS
SYSTEMS**

The Eagle Series CDMA PILOT SCANNERS

SPECIFICATIONS

HAWKEYE REAL-TIME SOFTWARE (Included) FOR BOTH EAGLE AND SUPER EAGLE

General Highlights:

- Windows 95 data capture application for extraction of Eagle scan information.
- Display and logging of Pilot, RSSI, and Base Station data on a real-time basis.
- Real-time GPS information updates for position, date/time, and heading data.
- Ability to focus in on key areas by use of various Eagle parameters or adjust amount and type of data received.

Pilot Measurements:

- $\frac{E_c}{I_o}$ and separate E_c measurement for all 512 base stations and all multipath components in 27 msec.
- Identifies received base stations relative to GPS time synchronization.
- Real-time displaying, logging, and playback of scan data.
- Configure parameters to set $\frac{E_c}{I_o}$ Threshold, PN range, and RF channel for qualifying data.

RSSI Measurements:

- Measure channel power for a specified frequency range.
- Sweep entire Cellular or PCS frequency range for RSSI Power.

Top Base Stations:

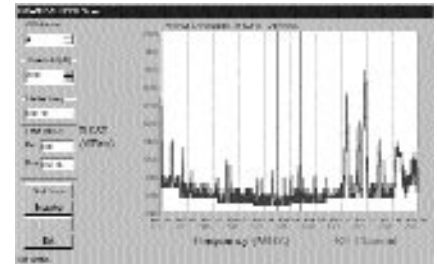
- View strongest base stations in bar chart format at a glance for specified RF channel.
- Configure $\frac{E_c}{I_o}$ threshold and PN range for qualifying data.

Export Data:

- Export data into formats such as ASCII and MapInfo for post-processing.
- Filter scan data for sampling rates and averaging.

Other:

- Additional features include setting the correlation length for greater sensitivity.



Above picture depicts a typical RSSI sweep with an Eagle CDMA Scanner using Hawkeye software.

SUPER EAGLE EXTENDED HARDWARE FEATURES

- | | |
|--|-------------------------------|
| ■ Extended $\frac{E_c}{I_o}$ sensitivity | Up to 9dB over standard Eagle |
| ■ Extended operating temperature range | 0° to 50°C |
| ■ Super low front end noise | LAN N.F. = 1.6dB |
| ■ 8 times the correlation hardware | 2048 parallel correlators |
| ■ Performs correlation of 2048 chips in a single chip time | 814 nsec |
| ■ Enhanced GPS GenLock frequency stability | ±25 parts per billion |
| ■ Measures pilot power at all 32768 PN offsets with one-half chip resolution | In 27 msec |

EAGLE CONNECTORS

Computer	RS-232 (DB9) male (38.4 kB to 115 kB)
GPS	Antenna SMA, female
Power	12V DC @ 6 Amps 4 pin female
RF input	50 ohms, Type-N, female

FREQUENCIES

Available in PCS, Korean PCS, Cellular or ISM bands.

OPTIONS:

MMX 233 MHz Pentium notebook with a 12.1" active VGA screen

FULL ONE YEAR WARRANTY INCLUDING ALL UPGRADES (HARDWARE AND SOFTWARE)