

Wolfhound Lite Overview

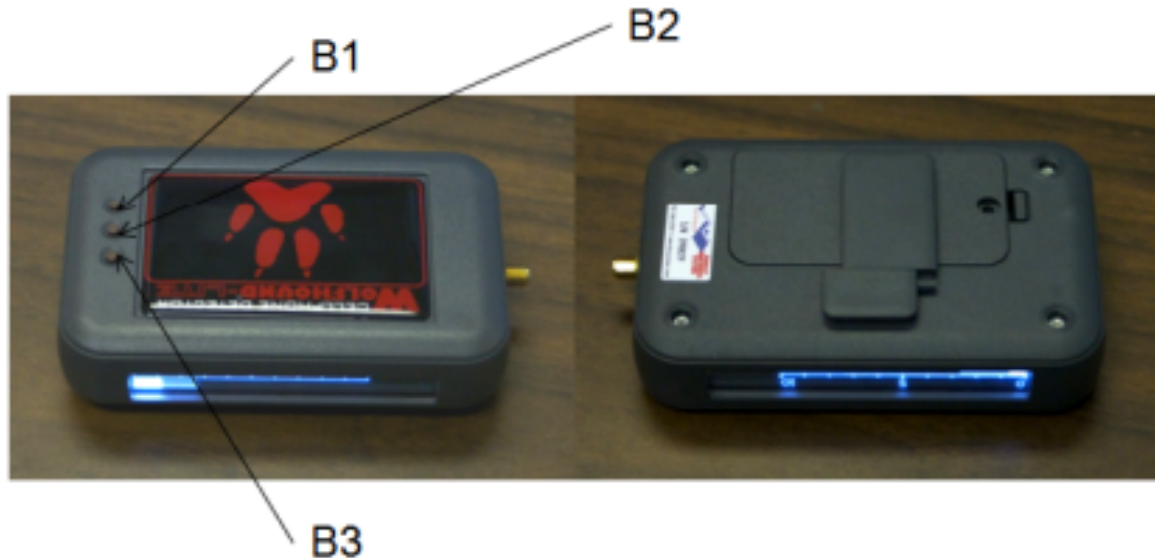
CELLPHONE DETECTOR
WOLFHOUND-LITE



Frequency Bands

Air Interface	Frequency Band (MHz)
North America	
GSM-850, GSM-900, CDMA, Cellular	824-849
	890-915
GSM-1900 / PCS-1900	1850-1910
E.U./Asia/Australia	
E-GSM-900	880-915
GSM 1800 (DCS-1800)	1710.2-1784.8
WCDMA/UMTS	1920-1980

Controls & Interfaces



Three-Button (B1, B2, B3) keypad

SMA port for RF Signal Input from External Antenna

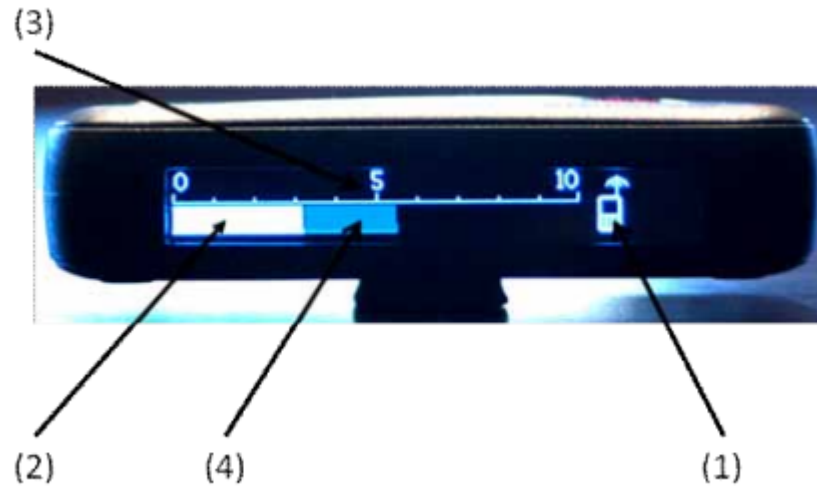
Wolfhound Lite Package (including optional Covert Antenna)



Instantaneous Boot Screen



OLED Screen Fields



1. Wolfhound Lite unit icon (will be periodically flashed as long as the detected signal exceeds pre-set threshold level)
2. Instantaneous Signal Level Bar-Chart (White)
3. Scale (White, Ranging 0-10)
4. Maximum-Hold Value Bar Chart (Gray)

Stealth Mode



OLED turned “OFF”, scrolling white dot

Vibrator function “ON”

Maintenance & Use



Two Rechargeable 9 Volt Lithium-Ion batteries & AC charger

Li-Ion battery Charging Time ~ 3.5 hours

Li-Ion battery Use time (with vibrator ON) ~ 3 hours

May also be operated on alkaline 9 Volt batteries continuously for up to 1 hour

External Antenna Options



Antenna 1 (Standard): Omnidirectional/Multi-Band

Antenna 2 (Optional): Imitated Pen / Multi-band

Antenna 1 Use



(a)



(b)

Belt-Mounted : unit upright, OLED facing the ceiling plane (a)

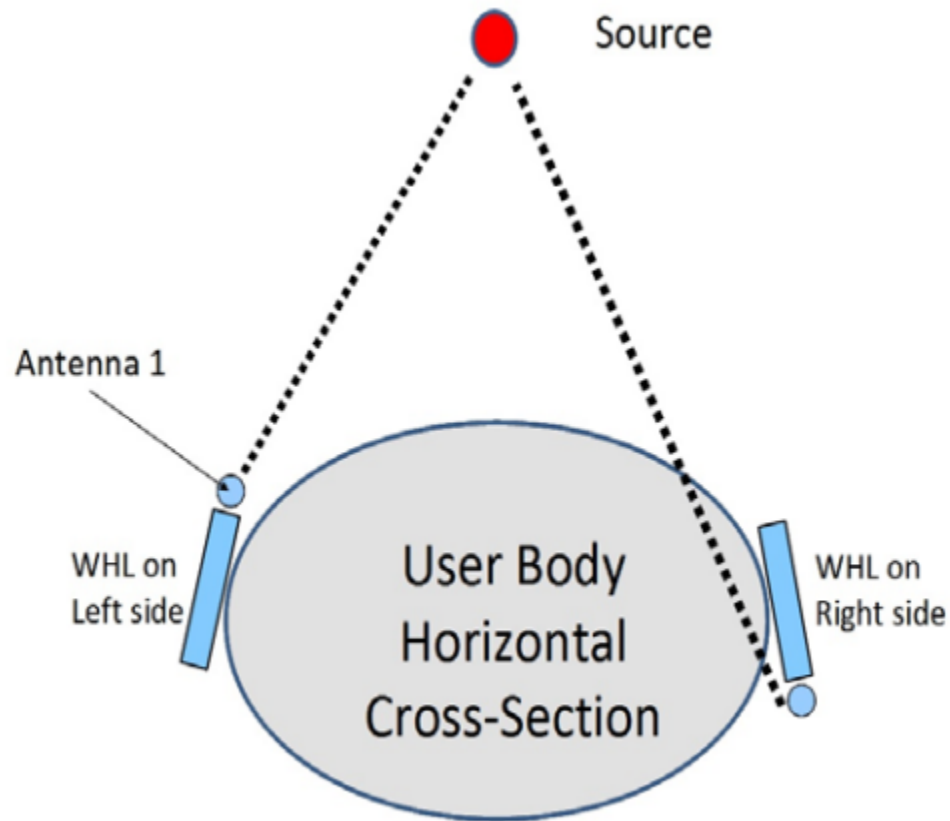
Hand-Held: keypad end down, external port up (b)



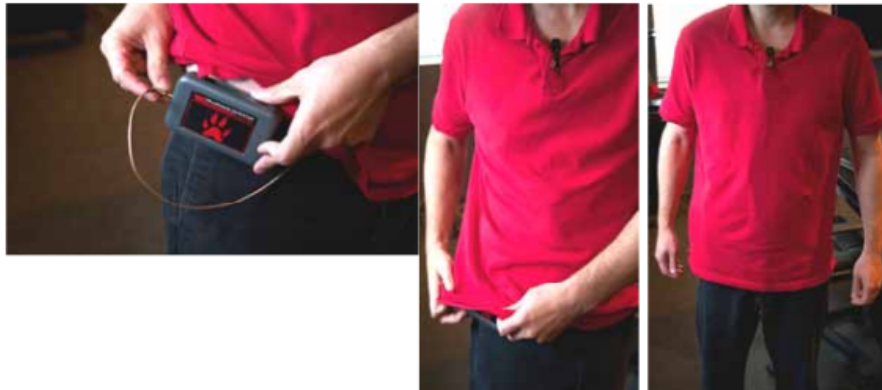
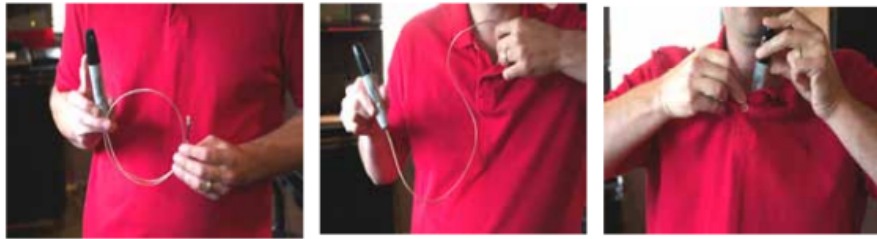
(c)

Table-Top: unit flat on its side (c)

Antenna 1 Signal Reception Considerations



Antenna 2 Use



Stealth v.s. Signal Reception Tradeoff Considerations

Stealth	Good Signal Reception
Wear unit and/or antenna next to one's clothing, hence body.	Keep unit and/or antenna away from large conducting surfaces/objects (this includes the user's body)
Keep unit and/or antenna out of sight	The antenna should have 360 degree unobstructed view in the region of space being monitored.
	Avoid enclosing unit and/or antenna in other objects with conducting or energy dissipating surfaces.