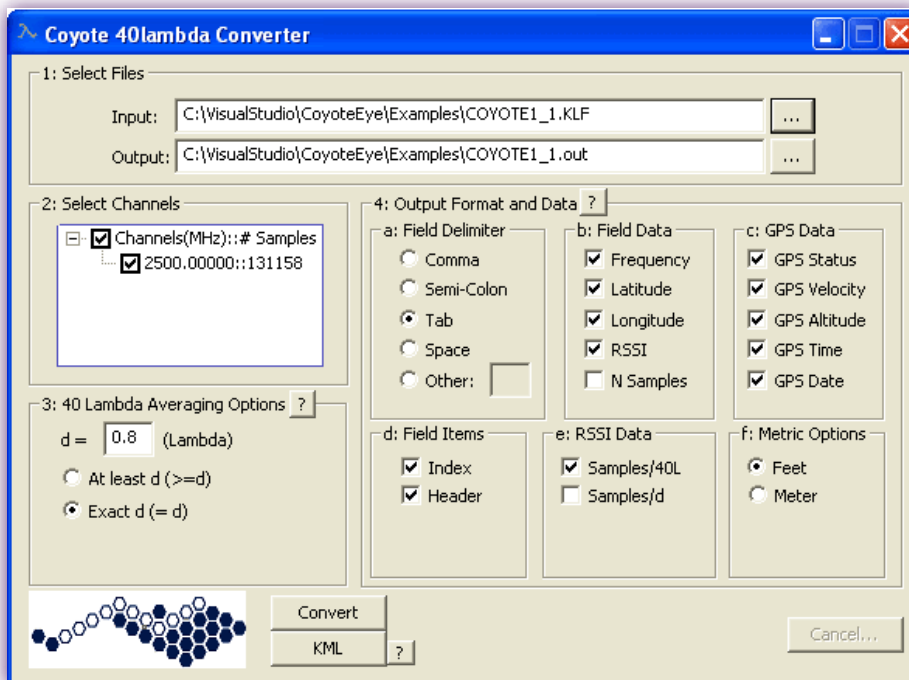


SIEVE™

PERFECT FOR **WiMAX** STUDIES
700 MHz, 2.5 or 3.5 GHz

40 Lambda Data Conversion Software

Sieve™ is a Windows XP application that generates spatially independent data and 40 Lambda averaged data that was collected from Berkeley's Gator™ stimulus Class A transmitter and Coyote™ or Panther™ modular receiver combination. The transmitter/receiver/software package is being distributed to WiMAX engineers, technicians and installers interested in optimizing their 2.5-2.7 and 3.4-3.7 GHz networks. **Sieve™** is able to generate spatially independent data and 40 Lambda averaged data into ASCII files through high-speed, two-stage filtering of redundant data. This data is received on one or two different Coyote™ or Panther receiver modules that may be swapped out while still in the field. In addition, the software also allows creation of KML files to map measured data onto programs such as GoogleEarth™. When combined with powerful BVS transmitter and receiver combos, **Sieve™** filtering software provides the best averaging options and reliability analysis in its class.



- Generate 40 Lambda averaged data in ASCII files
- Generate the independent data which are obtained by filtering the redundant data
- Create a KML file to map the measured data onto GoogleEarth
- Provide averaging options and reliability analysis
- Supports ISM, PCS, LMR, MMDS, WiMAX iDEN, ETACS Paging and more

Now Supports
DEAD RECKONING
GPS Navigation



**MODULAR
RECEIVER**

For fast scanning of all walkabout or drive-study surveys, use Berkeley's Class A Gator Transmitter series and Coyote Dual Modular Receiver System.

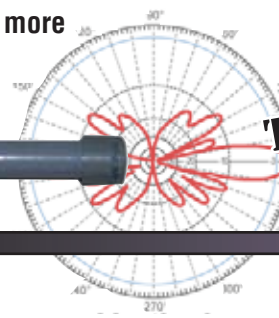
Gator™



**STIMULUS
TRANSMITTER**



Recommended 2.5-2.7 GHz omni-directional antenna



Call us today for more information:
TOLL FREE 1-888-737-4287

Tel: +1 732-548-3737

Fax: (732) 548-3404

www.bvsystems.com

email: sales@bvsystems.com

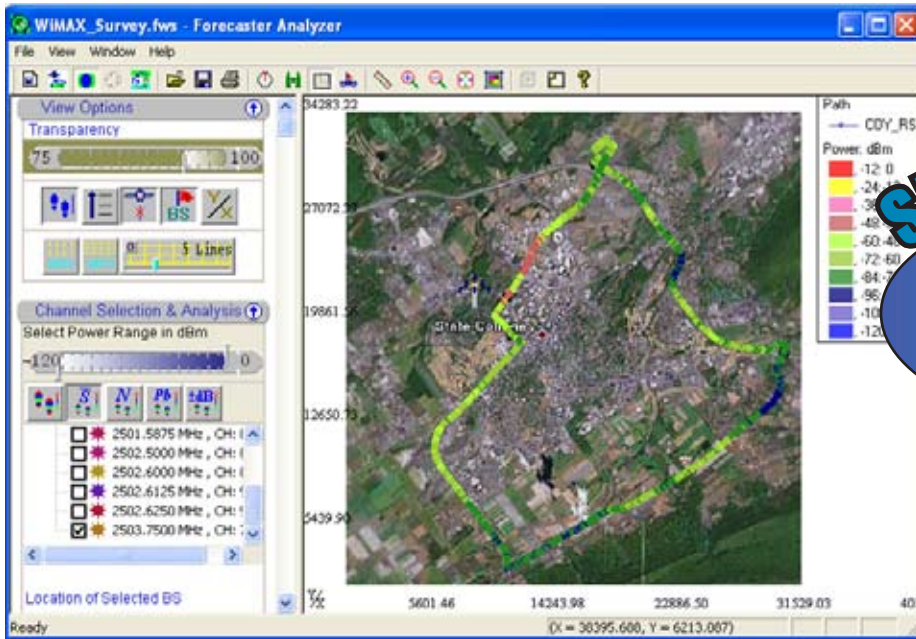
**BERKELEY
VARITRONICS
SYSTEMS®**



Clarifying RF

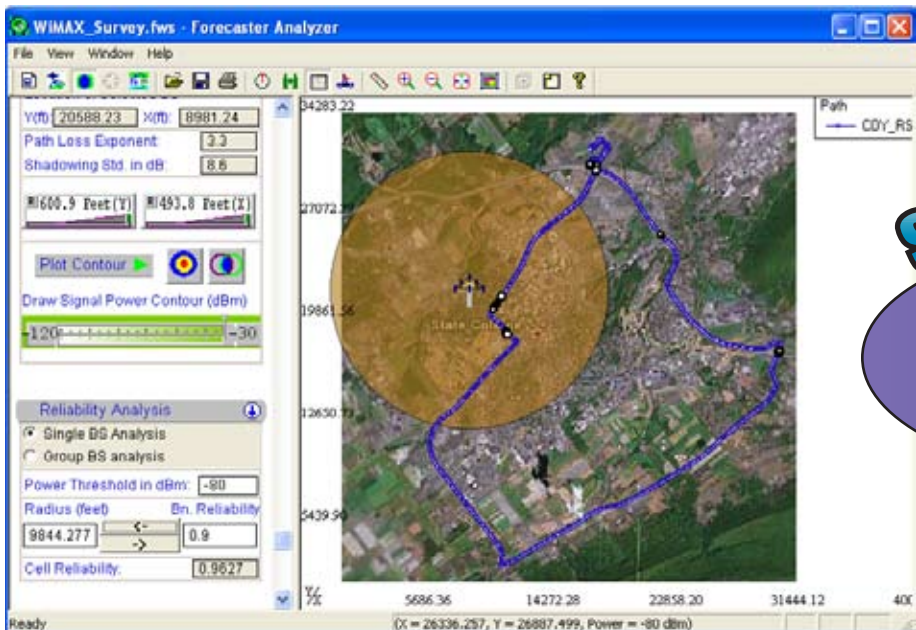
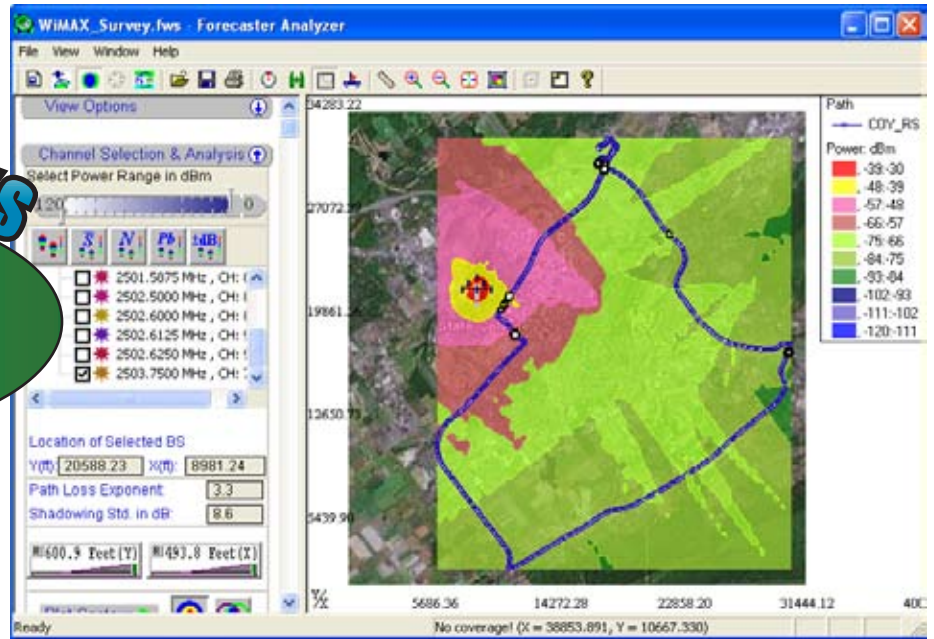
Providing wireless solutions for over 35 years.

SIEVE™ 40 LAMBDA CONVERSION KML REPORTS



SIEVE GENERATES
Averaged measurement data along the drive path for WiMAX networks.

SIEVE DISPLAYS
Coverage validation and prediction for WiMAX networks.



SIEVE REPORTS
Coverage reliability analysis for WiMAX networks.