

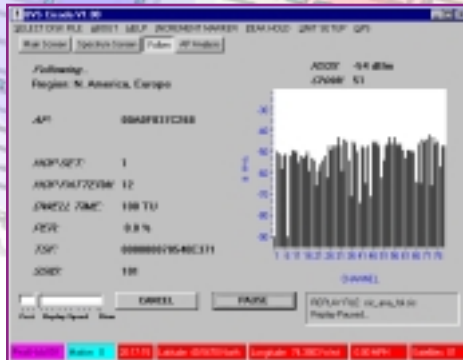
Cicada™

802.11 W-LAN TESTER

FHSS DRIVE-STUDY ANALYZER

Cicada™ is a wireless receiver designed for sweeping and optimizing 2.4 GHz Local Area Networks for analysis in drive-studies. The instrument measures coverage of FHSS (Frequency Hopping Spread Spectrum) CDMA networks which operate on the **IEEE 802.11** standard allowing the user to measure and determine the AP (Access Point) location, PER (Packet Error Rate), SSID and RSSI signal levels aiding in locating the hub and access points throughout a drivetest. **Cicada™** provides measurements in real time and logs data for further post processing analysis. Users may detect and differentiate from narrowband multipath interferences using the provided internal 12-channel GPS receiver, drive-test vehicle, GPS antenna and serial output to a laptop PC.

RSSI ✓
SSID ✓
PER ✓
GPS ✓



- Measure 2.4 GHz coverage for frequency-hopping (FHSS) wireless networks (IF wideband 1 MHz) within the **IEEE 802.11** standard
- Internal 12-channel, 12 satellite GPS for support of most popular mapping/post processing applications
- Identifies MAC address and SSID of any FHSS Access Point
- Measures Packet Error Rate on selected APs
- Measures and displays RF power measurements: narrow band received signal strength (RSSI), total channel power
- Includes peak hold on display for accurate measurements
- Removable ATA Flash card (16 MB compact) stores collected data for post processing
- Removable battery pack (5 AA Ni-MH cells), also can be powered from 12VDC car cigarette lighter
- Built-in numeric keypad, backlit display with simple menu interface

The Cicada is just one of many exceptional design solutions from Berkeley Varitronics. Call us today for more information: (732) 548-3737 / Fax: (732) 548-3404 Internet: www.bvsystems.com E-mail: info@bvsystems.com

wireless products **BERKELEY VARITRONICS SYSTEMS**

Cicada™

802.11 W-LAN TESTER



FHSS DRIVE-STUDY ANALYZER

BANDS SUPPORTED
RF SENSITIVITY
RSSI MEASUREMENT
TUNING INCREMENTS

ISM: 2.402-2.480 GHz
-20 to -90 dBm
-30 to -90 dBm
1 MHz steps (IEEE 802.11 channels)

GENERAL SPECIFICATIONS

IF Bandwidth:	Wideband 1 MHz
Stability:	± 2.5 PPM Temp range 32° to 120 F°
Antenna:	SMA Female 50 ohm
Controls:	16 button keypad
Warm Up Time:	< 3 minutes
Power:	Internal battery pack (5 AA Ni-MH batteries) or 12VDC from car adaptor
Weight:	3 lbs.
Dimensions:	2" H x 4" W x 9" L (water resistant, high impact ABS plastic case)
Internal GPS (included)	Motorola 12-channel differential capable receiver
Serial Port	RS-232

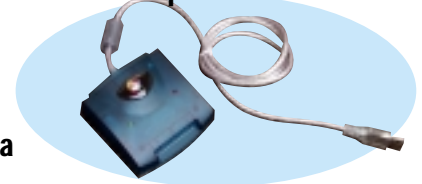
Cicada includes all of the following accessories:

Cicada includes a straight 3dBi 2.4 GHz antenna (SMA Female 50 ohm), GPS magmount antenna, two removable battery packs (5 AA Ni-MH cells and 12V car power adaptor) charger, RS-232 cable all in a rugged carrying case.



Cicada Data Logger™ data supports output to Microsoft Excel® spreadsheets and MapInfo® post processing applications for Windows 98®.

ATA compact flash reader



GPS active antenna
(SMC male connector)



16 MB compact flash



battery pack, charger & car
cigarette power adaptor

