

BVS Elephant

CDMA Playback Software

For Windows 95 & 98

Version 1.00

User Manual

Berkeley Varitronics Systems, Inc.

Copyright 1999, All Rights Reserved



BVS Elephant (v1.00)

User Manual

Introduction

The Elephant CDMA application software is the playback tool for BVS CDMA Receivers. The main screen of the application can be seen in Figure 1.

The Elephant was designed to playback log files which have been created with BVS PN Scanners. The file can be viewed in real-time, reverse, or fast-forward modes. The Elephant also has the ability to start from data markers placed into the log files.

The following sections of this document outline the various features of the Elephant software.

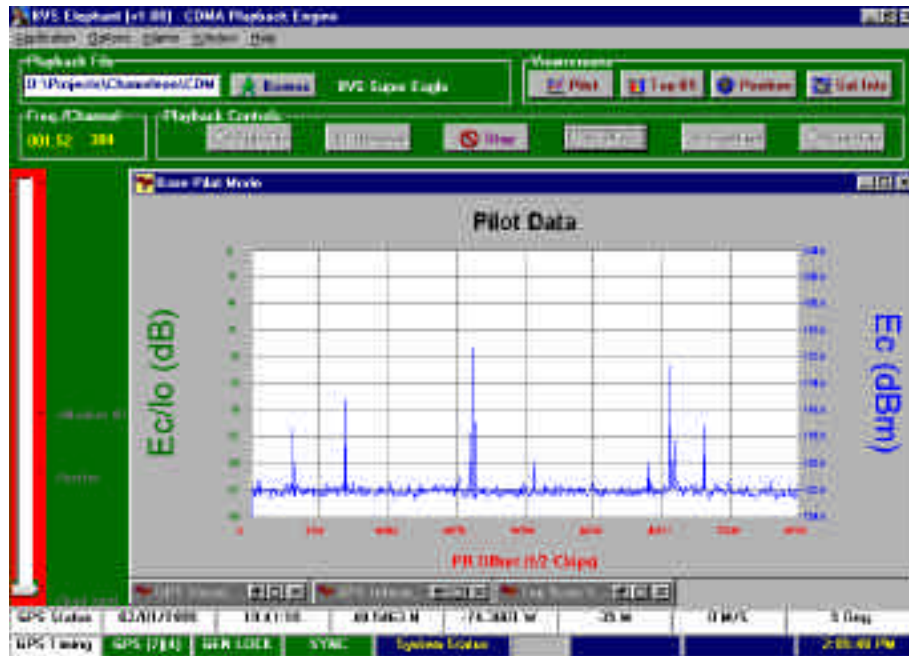


FIGURE 1 – Elephant Main Screen

Installation

Installation of Elephant is straightforward. Insert diskette #1 and run SETUP.EXE. This will load the installation program. Next, follow the steps outlined by this application. After the installation has been completed, an icon will be placed in the chosen folder (default is "Elephant"). This folder will sit minimized on the task bar. For easy access to Elephant, drag this icon from the folder onto the desktop.

Starting the Application

Start Elephant by clicking on the icon created by the installation utility. When the application starts, a screen similar to Figure 1 will be displayed. The user must then select a file to play back by clicking on the browse button. Once a file has been selected, an index file will be created for playback if it had not been done already. The index file is needed for reverse mode and to locate the embedded data markers. The remaining features of the application are discussed in the following sections.

Main Screen

The main screen contains a total of five different areas: The areas are the main menu, the control panel, the file tracking bar, the status bars, and the main viewing area. These areas are described in the following sections.

Main Menu

The main menu contains options which assist in the operation of the software. The 'Application' menu allows the user to exit the application. The 'View' menu allows each of the four available screens to be selected. The 'Alarms' screen allows the user to set different audible and visual alarms. The 'Window' menu contains options for cascading and tiling the available screens. Finally, the 'Help' menu contains the on-line version of this manual and an about information box.

Control Panel

As shown in Figure 1, the control panel contains the file selection controls as well as controls to navigate through the file and to view the four display screens. The four display screens are the pilot signal screen, the top base station screen, the GPS Satellite screen, and the GPS information screen. The file controls are similar to a VCR display and perform the functions indicated. The fast-forward and reverse modes only display one record per second of logged data. The play function displays all of the records.

File Tracking Bar

The file tracking bar is located on the left side of the main screen. The slider bar will move based on the location of the current record in the file. Any data markers in the file will appear just to the right of the track bar. The user may click on any of the data markers in order to move to that part of the file. Data markers are currently supported by the Super Eagle Data Logger.

Status Bars

The status bars indicate GPS information from the current file as well as the current system time. The information displayed is designed to look similar to the displays in the PN scanners made by Berkeley Varitronics Systems, Inc.

Index Files

A couple of notes about the index files created by the Elephant. If the log file is appended after the index file has been created, the index file will be recreated. If the index file already exists, the index file will not be updated.