

DRAGNET

FIXED OR MOBILE WiMAX SITE SURVEY SOFTWARE



FEATURES

- Create comprehensive drive-study survey bitmaps with GPS Projector
- Collect Fixed or Mobile WiMAX data by using GPS position for outdoor surveys
- Choose among 802.16e or 802.16d for detailed coverage analysis
- JPEG screen snapshots throughout any survey
- KML, PDF and Excel export and report printout support
- Survey data such as RSSI, CINR, Cell ID & Segment packet data on a preamble basis for further mapping coverage studies in multiple graphical and spreadsheet layouts
- Surveys may be exported further into KML files for plotting in applications such as Google Earth™

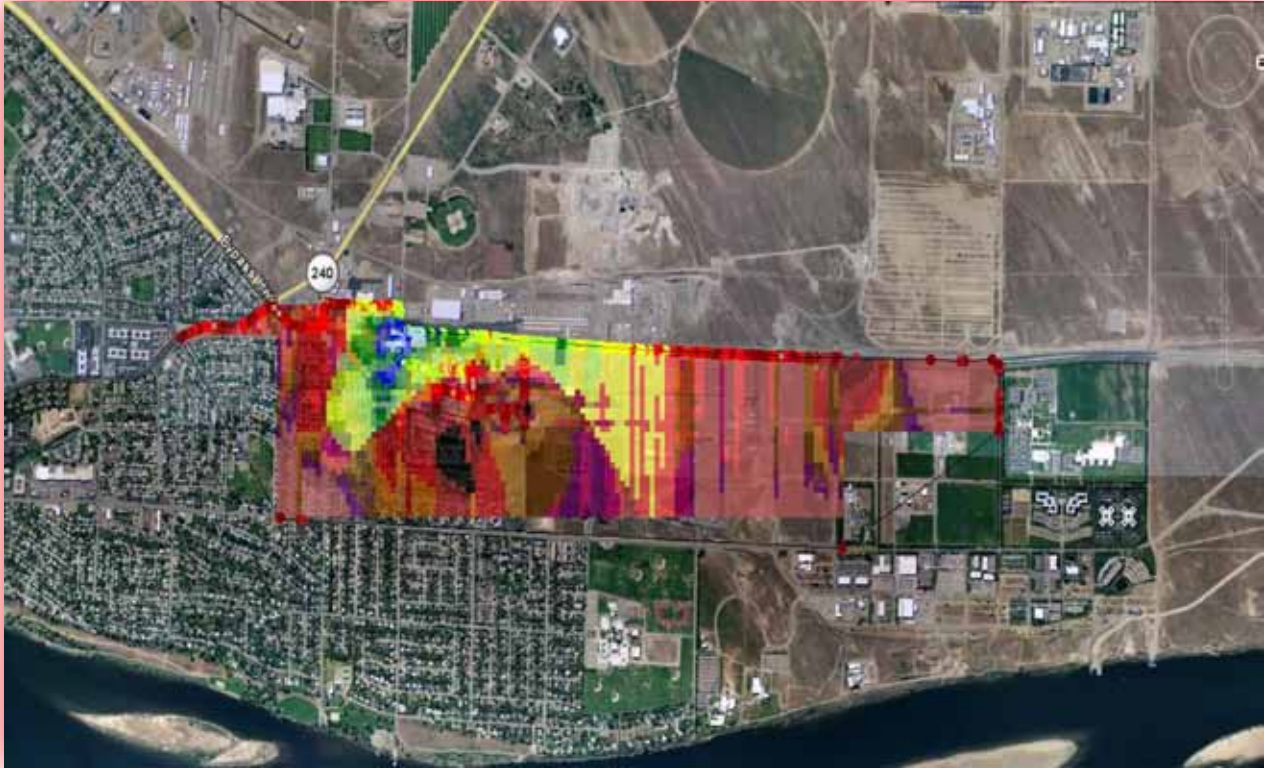
DragNet™ combines the power of realtime YellowFin™ WiMAX measurements with GPS geo-coding accuracy. First, create your survey bitmaps with Berkeley's GPS **PROJECTOR** software. Next, simply drive to any spot with GPS reception while **DragNet™ COLLECTOR** scans selected WiMAX Mobile channels and correlates them to your exact location automatically via GPS. GPS measurements provide both LAT and LON as well as time stamping for a complete WiMAX survey path anywhere in the world. Finally, survey data such as RSSI, CINR, Base ID (Fixed measurement only), Cell ID & Segment ID data on a preamble basis may be exported into **DragNet's ANALYZER** for further mapping coverage studies in multiple graphical and tabular layouts. Surveys may be exported further into KML files for plotting in applications such as Google Earth™.

Call us today for more information:
TOLL FREE 1-888-737-4287 / (outside U.S. & Canada) +1 732-548-3737
www.bvsystems.com
sales@bvsystems.com

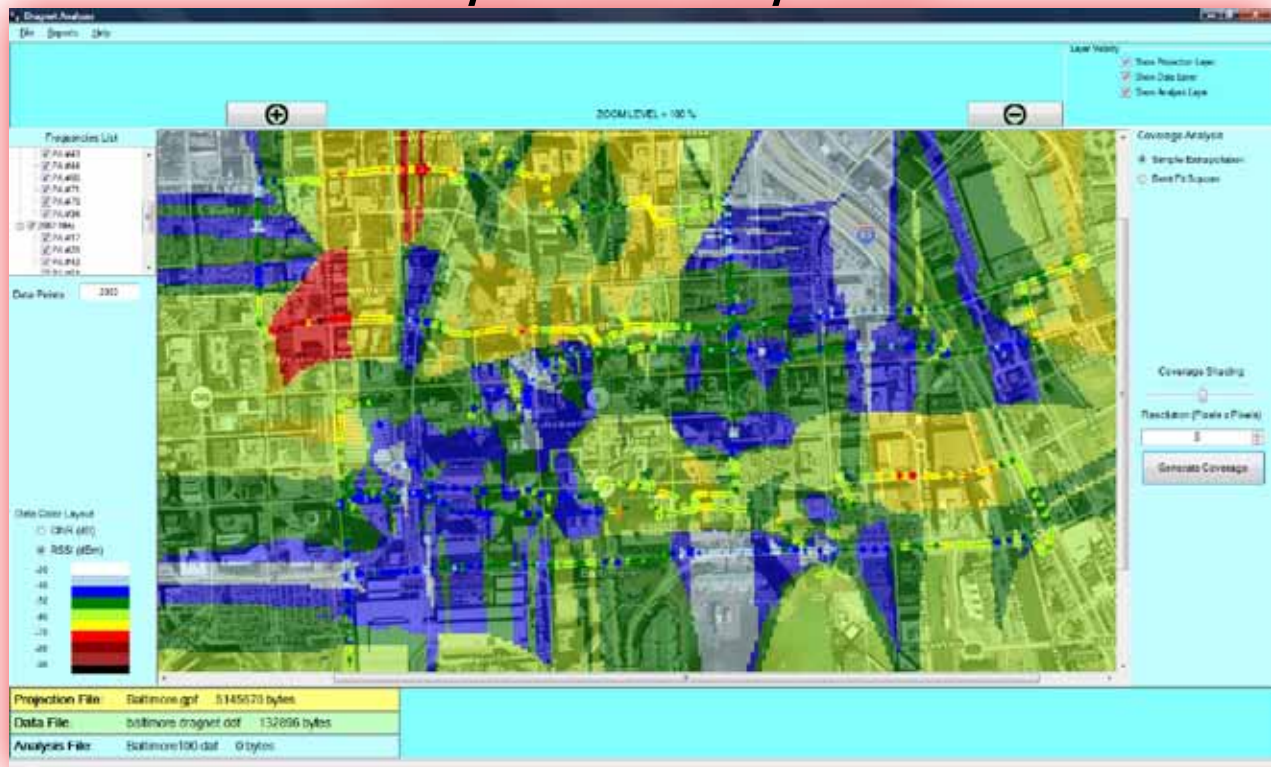
 **BERKELEY
VARITRONICS
SYSTEMS**
Clarifying RF
Providing wireless solutions for over 35 years.

DRAGNET MEASUREMENT SCREENS

Analyzer Drive-Study Screen



Analyzer Drive-Study Screen



powered by:



Providing wireless solutions for over 35 years.